

## Paintings 1978-82 (Selection)

1978-82 | Paintings



Gibson's Mirror (1978)  
alkyd on wood  
140cm x 97cm



Memory of the Flat Earth Society (1979)  
mixed technique on cotton  
95cm x 95cm



The Distant Edge (1979)  
alkyd on cotton  
97cm x 97cm



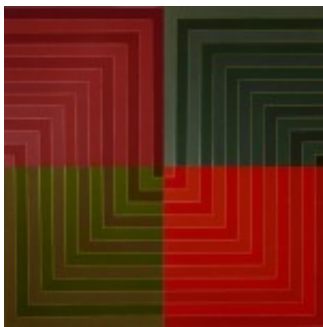
A System of Double Insecurity (1980)  
acrylic on cotton on board  
185cm x 96cm



Memorial to the Flat Earth Society (1980)  
mixed technique on cotton  
214cm x 107cm



Wavelength (1980)  
Four panels each 99cm x 99cm,  
hanging variable  
Mixed technique on hardboard



Wavelength (1980)  
Four panels each 99cm x 99cm,  
hanging variable  
Mixed technique on hardboard



Wavelength (1980)  
Four panels each 99cm x 99cm,  
hanging variable  
Mixed technique on hardboard



Astro-Fragment I – Soft Logic (1982)  
mixed technique on cotton, painted cardboard object  
180cm x 240cm